



Charlestown
Primary School



Personal, Social, Health and Economic (PSHE) Policy (inc, Relationship, Sex and Education Policy)

Version Number	V1
Date Adopted by Governors	7 th May 2024
Scheduled Review Date	Summer 2025
Statutory or Best Practice Policy	Statutory
School or Trust Policy	School

We want to ensure that your needs are met.
If you would like this information in any other format, please contact us on
01637 303106 or email info@kernowlearning.co.uk.

#AsOne
Kernow Learning

Context

All schools must provide a curriculum that is broadly based, balanced and meets the needs of all pupils. Under section 78 of the Education Act 2002 and the Academies Act 2010, a PSHE curriculum:

- Promotes the spiritual, moral, cultural, mental and physical development of pupils at the school and of society, and
- Prepares pupils at the school for the opportunities, responsibilities and experiences of later life including Relationships, Sex, Health and Economic Education (RSHE)

At Charlestown Primary School, we teach Personal, Social, Health Education as a whole-school approach to underpin children's development as people and because we believe that this also supports their learning capacity.

The Jigsaw Programme offers us a comprehensive, carefully thought-through Scheme of Work which brings consistency and progression to our children's learning in this vital curriculum area.

The overview of the programme can be seen within this document.

This also supports the "Personal Development" and "Behaviour and Attitudes" aspects required under the Ofsted Inspection Framework. This approach significantly contributes to the school's Safeguarding and Equality Duties, the understanding of British Values and the SMSC (Spiritual, Moral, Social, Cultural) development opportunities provided for our children.

Our school Context

We believe that the Jigsaw RSHE curriculum meets our school's individual needs and overall aim - to enable everyone to '*Inspire, Enrich and Enlighten*'. For us, the aim is seeing these core drivers in action which have been developed by members of our whole school family.

At Charlestown Primary school, well-being is at the heart of all teaching and learning. Our school ethos places the highest importance on recognising the development of the whole child and our strong pastoral care underpins this belief supporting our children to flourish. Our curriculum prepares children for the next stage of their education and to be 21st Century global citizens. We believe it is vital that pupils enjoy and are motivated by their learning and have the requisite skills to be successful learners with high aspirations. Through a range of contexts and approaches, including working collaboratively and providing opportunities for exploration, children are inspired to be creative, inquisitive, imaginative, and independent. These approaches enable children to feel safe to try new things thus building confidence and resilience.

Statutory Relationships and Health Education

"The Relationships Education, Relationships and Sex Education and Health Education (England) Regulations 2019, made under sections 34 and 35 of the Children and Social Work Act 2017, make Relationships Education compulsory for all pupils receiving primary education...They also make Health Education compulsory in all schools except independent schools. Personal, Social, Health and Economic Education (PSHE) continues to be compulsory in independent schools." DfE Guidance p.8 "Today's children and young people are growing up in an increasingly complex world and living their lives seamlessly on and offline. This presents many positive and exciting opportunities, but also challenges and risks. In this environment, children and young people need to know how to be safe and healthy, and how to manage their academic, personal, and social lives in a positive way." "This is why we have made Relationships Education compulsory in all primary schools in England...as well as making Health Education compulsory in all state-funded schools." "In primary schools, we want the subjects to put in place the key building blocks of healthy, respectful relationships, focusing on family and friendships, in all contexts, including online. This will sit alongside the essential understanding of how to be healthy." "These subjects represent a huge opportunity to help our children and young people develop. The knowledge and attributes gained will support their own, and others' wellbeing and attainment and help young people to become successful and happy adults who make a meaningful contribution to society." Secretary of State Foreword DfE Guidance 2019 p.4-5

“Schools are free to determine how to deliver the content set out in the DfE guidance 2019 in the context of a broad and balanced curriculum. Effective teaching in these subjects will ensure that core knowledge is broken down into units of manageable size and communicated clearly to pupils, in a carefully sequenced way, within a planned programme of lessons.” DfE Guidance p.8“

All schools must have in place a written policy for Relationships Education and RSE.” DfE Guidance p.11

Here, at Charlestown Primary School we value PSHE as one way to support children’s development as human beings, to enable them to understand and respect who they are, to empower them with a voice and to equip them for life and learning. We include the statutory Relationships and Health Education within our whole-school PSHE Programme. To ensure progression and a spiral curriculum which builds on prior learning and develops our understanding of ‘core concepts’, we use Jigsaw, the mindful approach to PSHE, as our chosen teaching and learning programme and tailor it to our children’s needs. The mapping document: Jigsaw 3-11 and statutory Relationships and Health Education, shows exactly how Jigsaw and therefore our school, meets the statutory Relationships and Health Education requirements. This programme’s complimentary update policy ensures we are always using the most up to date teaching materials and that our teachers are well-supported.

Our RSHE policy is informed by existing DfE guidance:

- Keeping Children Safe in Education (statutory guidance)
- Respectful School Communities: Self Review and Signposting Tool (a tool to support a whole school approach that promotes respect and discipline)
- Behaviour and Discipline in Schools (advice for schools, including advice for appropriate behaviour between pupils)
- Equality Act 2010 and schools
- SEND code of practice: 0 to 25 years (statutory guidance)
- Alternative Provision (statutory guidance)
- Mental Health and Behaviour in Schools (advice for schools)
- Preventing and Tackling Bullying (advice for schools, including advice on cyberbullying)
- Sexual violence and sexual harassment between children in schools (advice for schools)
- The Equality and Human Rights Commission Advice and Guidance (provides advice on avoiding discrimination in a variety of educational contexts)
- Promoting Fundamental British Values as part of SMSC in schools (guidance for maintained schools on promoting basic important British values as part of pupils’ spiritual, moral, social and cultural (SMSC)
- SMSC requirements for independent schools (guidance for independent schools on how they should support pupils’ spiritual, moral, social, and cultural development).

In addition, this policy is written alongside other school policies, including:

- Anti-bullying policy
- Positive Behaviour policy
- Safeguarding policy
- E-safety policy
- Staff code of conduct

The Jigsaw Programme is aligned to the PSHE Association Programmes of Study for PSHE.

What do we teach when and who teaches it?

Whole-school approach Jigsaw covers all areas of PSHE for the primary phase including statutory Relationships and Health Education. The table below gives the learning theme of each of the six Puzzles (units) and these are taught across the school; the learning deepens and broadens every year.

Term	Puzzle (Unit) Core concept	Content
Autumn 1	Being Me in my World	Includes understanding my own identity and how I fit well in the class, school and global community. Jigsaw Charter established.
Autumn 2	Celebrating Difference	Includes anti-bullying (cyber and homophobic bullying included) and understanding.
Spring 1	Changing me	Includes Relationships and Sex Education in context of coping positively with change.
Spring 2	Healthy Me	Includes drugs and alcohol education, self-esteem and confidence as well as healthy lifestyle choices, sleep, nutrition, rest and exercise.
Summer 1	Relationships	Includes understanding friendship, family and other relationships, conflict resolution and communication skills, bereavement and loss.
Summer 2	Dreams and Goals	Includes goal setting, aspirations, who do I want to become and what would I like to do for work and to contribute to society.

At Charlestown Primary School we allocate one session each week to PSHE in order to teach the PSHE knowledge and skills in a developmental and age-appropriate way.

At our school, depending on the content, how this links to other areas of learning and aspects that we are teaching through Circle Time, the time might be delivered through other areas which reflects our cross-curricular approach.

The explicit learning sequences of our PSHE curriculum are reinforced and enhanced in many ways:

Assemblies and collective worship, praise and reward system, through relationships child to child, adult to child and adult to adult across the school. We aim to ‘live’ what is learnt and apply it to everyday situations in the school community.

School staff deliver the weekly lessons to their own classes.

Relationships Education

What does the DfE statutory guidance on Relationships Education expect children to know by the time they leave primary school?

Relationships Education in primary schools will cover ‘Families and people who care for me’, ‘Caring friendships’, ‘Respectful relationships’, ‘Online relationships’, and ‘Being safe’.

The expected outcomes for each of these elements can be found further on in this policy. The way the Jigsaw Programme covers these is explained in the mapping document: Jigsaw 3-11 and Statutory Relationships and Health Education.

It is important to explain that whilst the Relationships Puzzle (unit) in Jigsaw covers most of the statutory Relationships Education, some of the outcomes are also taught elsewhere in Jigsaw e.g. the Celebrating Difference Puzzle helps children appreciate that there are many types of family composition and that each is important to the children involved. This holistic approach ensures the learning is reinforced through the year and across the curriculum.

Parents should also be aware that the Relationships and Sex education should: “Make it clear that relationships and sex education is designed to prepare all pupils for the future, regardless of sexual orientation or gender identity. RSE must promote gender equality and LGBTQ+ equality and it must challenge discrimination. RSE must take the needs and experiences of LGBTQ+ people into account, and it should seek to develop understanding that there are a variety of relationships and family patterns in the modern world.”

Health Education

What does the DfE statutory guidance on Health Education expect children to know by the time they leave primary school?

Health Education in primary schools will cover ‘Mental wellbeing’, ‘Internet safety and harms’, ‘Physical health and fitness’, ‘Healthy eating’, ‘Drugs, alcohol and tobacco’, ‘Health and prevention’, ‘Basic First Aid’, ‘Changing adolescent body’. The expected outcomes for each of these elements can be found further on in this policy. The way the Jigsaw Programme covers these is explained in the mapping document: Jigsaw 3-11 and Statutory Relationships and Health Education.

It is important to explain that whilst the Healthy Me Puzzle (unit) in Jigsaw covers most of the statutory Health Education, some of the outcomes are taught elsewhere in Charlestown Primary School – PSHE (Personal, Social, Health Education) Policy – Including RSE (Relationships and Sex Education) 7 Jigsaw e.g. emotional and mental health is nurtured every lesson through the ‘Calm me’ time, social skills are grown every lesson through the ‘Connect us’ activity and respect is enhanced through the use of the Jigsaw Charter.

Also, teaching children about puberty is now a statutory requirement which sits within the Health Education part of the DfE guidance within the ‘Changing adolescent body’ strand, and in Jigsaw this is taught as part of the Changing Me Puzzle (unit).

Again, the mapping document transparently shows how the Jigsaw whole-school approach spirals the learning and meets all statutory requirements and more.

Sex Education

The DfE Guidance 2019 (p.23) recommends that all primary schools ‘have a sex education programme tailored to the age and the physical and emotional maturity of the pupils.

However, ‘Sex Education is not compulsory in primary schools’. (p. 23) Schools are to determine the content of sex education at primary school. Sex education ‘should ensure that both boys and girls are prepared for the changes that adolescence brings and – drawing on knowledge of the human life cycle set out in the national curriculum for science - how a baby is conceived and born’.

At Charlestown Primary School, we believe children should understand the facts about human reproduction before they leave primary school so that: -

- they see that puberty needs to happen to enable them to have babies in adulthood; -
- this knowledge helps to safeguard them.

We define Sex Education as an understanding of puberty and human reproduction, and we intend to teach our pupils about puberty and menstruation as part of our school’s statutory science curriculum. This is delivered through the age appropriate PSHE ‘changing me’ units from within the Jigsaw Scheme of Work in combination with our science curriculum.

Year 4, Lesson 2 (Having a baby)

Year 5, Lesson 4 (Conception)

Year 6, Lesson 4 (Conception, birth)

Parents’ right to request their child be excused from Sex Education

At Charlestown Primary School, puberty and menstruation is taught as a statutory requirement of science education and covered by our Jigsaw PSHE Programme in the ‘Changing Me’ Puzzle (unit). As this is part of the statutory science education curriculum, parents do not have the right to withdraw from these elements of the curriculum.

Monitoring and Review

The school’s Local Advisory Board monitors this policy on an annual basis. The governors report its findings and recommendations to the Trust Board, as necessary, if the policy needs modification. The Local Advisory Board gives serious consideration to any comments from parents about the PSHE

(RSHE) programme and makes a record of all such comments. Governors scrutinise and ratify teaching materials to check they are in accordance with the school's ethos.

Equality

The DfE Guidance 2019 (p. 15) states, "Schools should ensure that the needs of all pupils are appropriately met, and that all pupils understand the importance of equality and respect. Schools must ensure they comply with the relevant provisions of the Equality Act 2010 for *all* protected characteristics."

At Charlestown Primary School, we believe that it is appropriate to teach our pupils about protected characteristics and we ensure this is fully integrated into our curriculum. It is taught and reflected upon through circle time, age-appropriate PSHE Jigsaw Units, class worship and focus days and community events. This can also have an impact on any anti-bullying policy in regard to these characteristics being the reason for the issue.

At Charlestown Primary School we promote respect for all and value every individual child. We also respect the right of our children, their families, and our staff, to hold beliefs, religious or otherwise, and understand that sometimes these may be in tension with our approach to some aspects of Relationships, Health and Sex Education.

Jigsaw PSHE documents needed to explain this policy:

- Jigsaw 3-11 and statutory Relationships and Health Education (mapping document)
- Including and valuing all children.

Relationships Education in Primary schools – DfE Guidance 2019

The focus in primary school should be on teaching the fundamental building blocks and characteristics of positive relationships, with particular reference to friendships, family relationships, and relationships with other children and with adults.

The guidance states that, by the end of primary school:

	Pupils should know...	How Jigsaw provides the solution
Families and people who care for me	<ul style="list-style-type: none"> • that families are important for children growing up because they can give love, security and stability. • the characteristics of healthy family life, commitment to each other, including in times of difficulty, protection and care for children and other family members, the importance of spending time together and sharing each other's lives. • that others' families, either in school or in the wider world, sometimes look different from their family, but that they should respect those differences and know that other children's families are also characterised by love and care. • that stable, caring relationships, which may be of different types, are at the heart of happy families, and are important for children's security as they grow up. • that marriage represents a formal and legally recognised commitment of two people to each other which is intended to be lifelong (Marriage in England and Wales is available to both opposite sex and same sex couples. The Marriage (Same Sex Couples) Act 2013 extended marriage to same sex couples in England and Wales. The ceremony through which a couple get married may be civil or religious). • how to recognise if family relationships are making them feel unhappy or unsafe, and how to seek help or advice from others if needed. • about different types of bullying (including cyberbullying), the impact of bullying, responsibilities of bystanders (primarily reporting bullying to an adult) and how to get help. • what a stereotype is, and how stereotypes can be unfair, negative or destructive. • the importance of permission-seeking and giving in relationships with friends, peers and adults. 	<p>All of these aspects are covered in lessons within the Puzzles</p> <ul style="list-style-type: none"> • Relationships • Changing Me • Celebrating Difference • Being Me in My World
Online relationships	<ul style="list-style-type: none"> • that people sometimes behave differently online, including by pretending to be someone they are not. 	<p>All of these aspects are covered in lessons within the Puzzles</p>

	<ul style="list-style-type: none"> • that the same principles apply to online relationships as to face-to-face relationships, including the importance of respect for others online including when we are anonymous. • the rules and principles for keeping safe online, how to recognise risks, harmful content and contact, and how to report them. • how to critically consider their online friendships and sources of information including awareness of the risks associated with people they have never met. • how information and data is shared and used online. 	<ul style="list-style-type: none"> • Relationships • Changing Me • Celebrating Difference
Being safe	<ul style="list-style-type: none"> • what sorts of boundaries are appropriate in friendships with peers and others (including in a digital context). • about the concept of privacy and the implications of it for both children and adults; including that it is not always right to keep secrets if they relate to being safe. • that each person's body belongs to them, and the differences between appropriate and inappropriate or unsafe physical, and other, contact. • how to respond safely and appropriately to adults they may encounter (in all contexts, including online) whom they do not know. • how to recognise and report feelings of being unsafe or feeling bad about any adult. • how to ask for advice or help for themselves or others, and to keep trying until they are heard. • how to report concerns or abuse, and the vocabulary and confidence needed to do so. • where to get advice e.g. family, school and/or other sources. 	<p>All of these aspects are covered in lessons within the Puzzles</p> <ul style="list-style-type: none"> • Relationships • Changing Me • Celebrating Difference

Physical health and mental well-being education in Primary schools – DfE Guidance

The focus in primary school should be on teaching the characteristics of good physical health and mental wellbeing. Teachers should be clear that mental well-being is a normal part of daily life, in the same way as physical health.

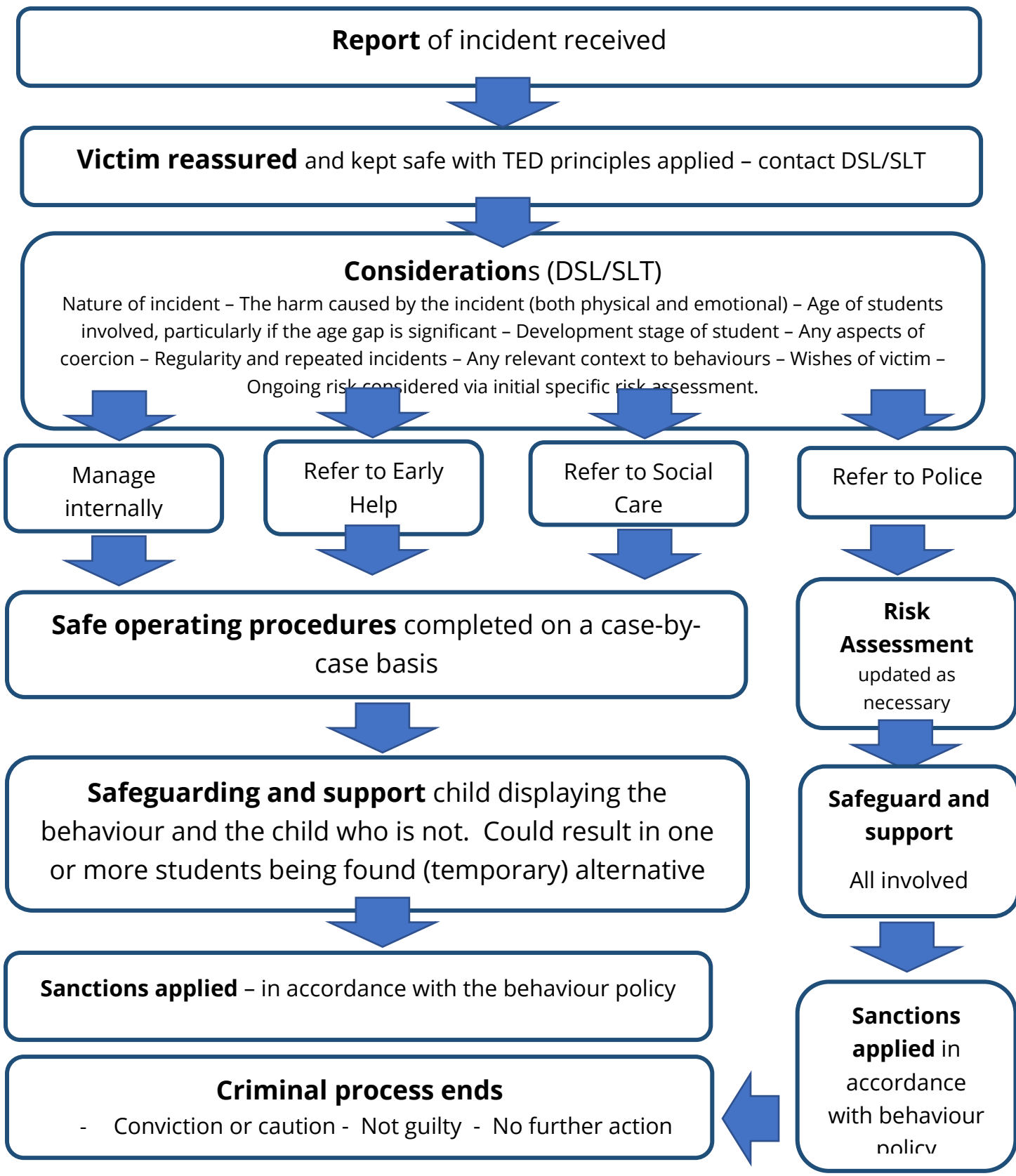
By the end of primary school:

	Pupils should know	How Jigsaw provides the solution
<p>Mental wellbeing</p>	<ul style="list-style-type: none"> • that mental wellbeing is a normal part of daily life, in the same way as physical health. • that there is a normal range of emotions (e.g. happiness, sadness, anger, fear, surprise, nervousness) and scale of emotions that all humans experience in relation to different experiences and situations. • how to recognise and talk about their emotions, including having a varied vocabulary of words to use when talking about their own and others' feelings. • how to judge whether what they are feeling and how they are behaving is appropriate and proportionate. • the benefits of physical exercise, time outdoors, community participation, voluntary and service-based activity on mental well-being and happiness. • simple self-care techniques, including the importance of rest, time spent with friends and family and the benefits of hobbies and interests. • isolation and loneliness can affect children and that it is very important for children to discuss their feelings with an adult and seek support. • that bullying (including cyberbullying) has a negative and often lasting impact on mental well-being. • where and how to seek support (including recognising the triggers for seeking support), including whom in school they should speak to if they are worried about their own or someone else's mental well-being or ability to control their emotions (including issues arising online). • it is common for people to experience mental ill health. For 	<p>All of these aspects are covered in lessons within the Puzzles</p> <ul style="list-style-type: none"> • Healthy Me • Relationships • Changing Me • Celebrating Difference

	<p>many people who do, the problems can be resolved if the right support is made available, especially if accessed early enough.</p>	
<p>Internet safety and harms</p>	<ul style="list-style-type: none"> • that for most people the internet is an integral part of life and has many benefits. • about the benefits of rationing time spent online, the risks of excessive time spent on electronic devices and the impact of positive and negative content online on their own and others' mental and physical wellbeing. • how to consider the effect of their online actions on others and knowhow to recognise and display respectful behaviour online and the importance of keeping personal information private. • why social media, some computer games and online gaming, for example, are age restricted. • that the internet can also be a negative place where online abuse, trolling, bullying and harassment can take place, which can have a negative impact on mental health. • how to be a discerning consumer of information online including understanding that information, including that from search engines, is ranked, selected and targeted. • where and how to report concerns and get support with issues online. 	<p>All of these aspects are covered in lessons within the Puzzles</p> <ul style="list-style-type: none"> • Relationships • Healthy Me
<p>Physical health and fitness</p>	<ul style="list-style-type: none"> • the characteristics and mental and physical benefits of an active lifestyle. • the importance of building regular exercise into daily and weekly routines and how to achieve this; for example, walking or cycling to school, a daily active mile or other forms of regular, vigorous exercise. • the risks associated with an inactive lifestyle (including obesity). • how and when to seek support including which adults to speak to in school if they are worried about their health. 	<p>All of these aspects are covered in lessons within the Puzzles</p> <ul style="list-style-type: none"> • Healthy Me
<p>Healthy eating</p>	<ul style="list-style-type: none"> • what constitutes a healthy diet (including understanding calories and other nutritional content). • the principles of planning and preparing a range of healthy meals. 	<p>All of these aspects are covered in lessons within the Puzzles</p> <ul style="list-style-type: none"> • Healthy Me

	<ul style="list-style-type: none"> the characteristics of a poor diet and risks associated with unhealthy eating (including, for example, obesity and tooth decay) and other behaviours (e.g. the impact of alcohol on diet or health). 	
Drugs, alcohol and tobacco	<ul style="list-style-type: none"> how to recognise early signs of physical illness, such as weight loss, or unexplained changes to the body. about safe and unsafe exposure to the sun, and how to reduce the risk of sun damage, including skin cancer. the importance of sufficient good quality sleep for good health and that a lack of sleep can affect weight, mood and ability to learn. about dental health and the benefits of good oral hygiene and dental flossing, including regular check-ups at the dentist. about personal hygiene and germs including bacteria, viruses, how they are spread and treated, and the importance of handwashing. the facts and science relating to immunisation and vaccination 	<p>All of these aspects are covered in lessons within the Puzzles</p> <ul style="list-style-type: none"> Healthy Me
Basic first aid	<ul style="list-style-type: none"> how to make a clear and efficient call to emergency services if necessary. concepts of basic first-aid, for example dealing with common injuries, including head injuries. 	<p>All of these aspects are covered in lessons within the Puzzles</p> <ul style="list-style-type: none"> Healthy Me <p>At King Charles, we have also committed to ensuring that our pupils leave our school with basic first aid and we teach this to our Year 6 pupils through a local provider.</p>
Changing adolescent body	<ul style="list-style-type: none"> key facts about puberty and the changing adolescent body, particularly from age 9 through to age 11, including physical and emotional changes. about menstrual wellbeing including the key facts about the menstrual cycle. 	<p>All of these aspects are covered in lessons within the Puzzles</p> <ul style="list-style-type: none"> Changing Me Healthy Me

Charlestown Primary will follow the following process when incidents of sexual harassment or sexual abuse are reported.



An overview of the Jigsaw scheme of work we use to underpin our PSHE and RSHE teaching.

Age Group	Being Me in My World	Celebrating Difference	Dreams and Goals	Healthy Me	Relationships	Changing Me
Ages 3-5 (F1-F2)	Self-identity Understanding feelings Being in a classroom Being gentle Rights and responsibilities	Identifying talents Being special Families Where we live Making friends Standing up for yourself	Challenges Perseverance Goal-setting Overcoming obstacles Seeking help Jobs Achieving goals	Exercising bodies Physical activity Healthy food Sleep Keeping clean Safety	Family life Friendships Breaking friendships Falling out Dealing with bullying Being a good friend	Bodies Respecting my body Growing up Growth and change Fun and fears Celebrations
Ages 5-6	Feeling special and safe Being part of a class Rights and responsibilities Rewards and feeling proud Consequences Owning the Learning Charter	Similarities and differences Understanding bullying and knowing how to deal with it Making new friends Celebrating the differences in everyone	Setting goals Identifying successes and achievements Learning styles Working well and celebrating achievement with a partner Tackling new challenges Identifying and overcoming obstacles Feelings of success	Keeping myself healthy Healthier lifestyle choices Keeping clean Being safe Medicine safety/safety with household items Road safety Linking health and happiness	Belonging to a family Making friends/being a good friend Physical contact preferences People who help us Qualities as a friend and person Self-acknowledgement Being a good friend to myself Celebrating special relationships	Life cycles – animal and human Changes in me Changes since being a baby Differences between female and male bodies (correct terminology) Linking growing and learning Coping with change Transition
Ages 6-7	Hopes and fears for the year Rights and responsibilities Rewards and consequences Safe and fair learning environment Valuing contributions Choices Recognising feelings	Assumptions and stereotypes about gender Understanding bullying Standing up for self and others Making new friends Gender diversity Celebrating difference and remaining friends	Achieving realistic goals Perseverance Learning strengths Learning with others Group co-operation Contributing to and sharing success	Motivation Healthier choices Relaxation Healthy eating and nutrition Healthier snacks and sharing food	Different types of family Physical contact boundaries Friendship and conflict Secrets Trust and appreciation Expressing appreciation for special relationships	Life cycles in nature Growing from young to old Increasing independence Differences in female and male bodies (correct terminology) Assertiveness Preparing for transition
Ages 7-8	Setting personal goals Self-identity and worth Positivity in challenges Rules, rights and responsibilities Rewards and consequences Responsible choices Seeing things from others' perspectives	Families and their differences Family conflict and how to manage it (child-centred) Witnessing bullying and how to solve it Recognising how words can be hurtful Giving and receiving compliments	Difficult challenges and achieving success Dreams and ambitions New challenges Motivation and enthusiasm Recognising and trying to overcome obstacles Evaluating learning processes Managing feelings Simple budgeting	Exercise Fitness challenges Food labelling and healthy swaps Attitudes towards drugs Keeping safe and why it's important online and off line scenarios Respect for myself and others Healthy and safe choices	Family roles and responsibilities Friendship and negotiation Keeping safe online and who to go to for help Being a global citizen Being aware of how my choices affect others Awareness of how other children have different lives Expressing appreciation for family and friends	How babies grow Understanding a baby's needs Outside body changes Inside body changes Family stereotypes Challenging my ideas Preparing for transition

Age Group	Being Me In My World	Celebrating Difference	Dreams and Goals	Healthy Me	Relationships	Changing Me
Ages 8-9	Being part of a class team Being a school citizen Rights, responsibilities and democracy (school council) Rewards and consequences Group decision-making Having a voice What motivates behaviour	Challenging assumptions Judging by appearance Accepting self and others Understanding influences Understanding bullying Problem-solving Identifying how special and unique everyone is First impressions	Hopes and dreams Overcoming disappointment Creating new, realistic dreams Achieving goals Working in a group Celebrating contributions Resilience Positive attitudes	Healthier friendships Group dynamics Smoking Alcohol Assertiveness Peer pressure Celebrating inner strength	Jealousy Love and loss Memories of loved ones Getting on and Falling Out Girlfriends and boyfriends Showing appreciation to people and animals	Being unique Having a baby Girls and puberty Confidence in change Accepting change Preparing for transition Environmental change
Ages 9-10	Planning the forthcoming year Being a citizen Rights and responsibilities Rewards and consequences How behaviour affects groups Democracy, having a voice, participating	Cultural differences and how they can cause conflict Racism Rumours and name-calling Types of bullying Material wealth and happiness Enjoying and respecting other cultures	Future dreams The importance of money Jobs and careers Dream job and how to get there Goals in different cultures Supporting others (charity) Motivation	Smoking, including vaping Alcohol Alcohol and anti-social behaviour Emergency aid Body image Relationships with food Healthy choices Motivation and behaviour	Self-recognition and self-worth Building self-esteem Safer online communities Rights and responsibilities online Online gaming and gambling Reducing screen time Dangers of online grooming SMART internet safety rules	Self- and body image Influence of online and media on body image Puberty for girls Puberty for boys Conception (including IVF) Growing responsibility Coping with change Preparing for transition
Ages 10-11	Identifying goals for the year Global citizenship Children's universal rights Feeling welcome and valued Choices, consequences and rewards Group dynamics Democracy, having a voice Anti-social behaviour Role-modelling	Perceptions of normality Understanding disability Power struggles Understanding bullying Inclusion/exclusion Differences as conflict, difference as celebration Empathy	Personal learning goals, in and out of school Success criteria Emotions in success Making a difference in the world Motivation Recognising achievements Compliments	Taking personal responsibility How substances affect the body Exploitation, including 'county lines' and gang culture Emotional and mental health Managing stress	Mental health Identifying mental health worries and sources of support Love and loss Managing feelings Power and control Assertiveness Technology safety Take responsibility with technology use	Self-image Body image Puberty and feelings Conception to birth Reflections about change Physical attraction Respect and consent Boyfriends/girlfriends Sexting Transition
Ages 11-12 (Scotland)	Personal identity What influences personal identity Identify personal strengths How do others see me? Group identity My growing sense of personal identity and independence Online and global identity Expectations	Assertiveness Prejudice and discrimination My values and those of others Challenging stereotypes Discrimination in school How prejudice and discrimination fuels bullying Being inclusive	What are my dreams and goals? Steps to success Coping when things don't go to plan Rewarding my dreams Intrinsic and extrinsic motivation Keeping my dreams alive How dreams and goals change in response to life	Healthy choices about my emotional health Managing stress Managing my choices around substances Managing my nutritional choices Medicines and immunisation Healthy choices about physical activity and rest/sleep	My changing web of friendships Support I need now and in the future Developing positive relationships What external factors affect relationships, e.g. media influences? Assertiveness in relationships The changing role of families	My changing body and feelings What is self-image? Coping during times of change My changing ways of thinking Managing my changes in mood Moving forwards into my next year of education

© Copyright 2020 Jigsaw PSHE Ltd