

Wendron

C of E Primary School



Access to School Site/Security Policy

Version Number	V1
Date Adopted by Governors	March 2025
Scheduled Review Date	March 2027
Statutory or Best Practice Policy	Best Practice
School or Trust Policy	School

We want to ensure that your needs are met.
If you would like this information in any other format, please contact us on
01637 303106 or email info@kernowlearning.co.uk.

Policy for Security Procedures

At Wendron C of E School the pupils should work and learn in a safe and secure environment where everyone is able to live life in all its fullness. Families need to be confident that the school provides such an environment. Staff should feel that the LGB has done everything it can to make the school a safe place in which to work.

At Wendron C of E School we are acutely aware that the children and staff might be vulnerable to assault while on the premises. The personal safety of the whole school community is paramount; the Governors and staff take the threat of assault, arson and vandalism very seriously. We take stringent measures to reduce the risks and support fully members of staff or pupils who are the subject of assault. The Police are notified and legal action taken, if necessary.

Wendron C of E School is fully committed to the health, safety and well-being of all pupils, staff and visitors. This policy aims to outline the rules and guidelines for safe access to and from our school site, and has been set with the safety and security of your children as a top priority.

This policy applies between 7.45am and 5.00pm.

Context - School day

KS1	8.45am – 3.15pm	Staff in classrooms ready to receive children from 8.45 – children enter via external classroom door.
KS2	8.45 am – 3.15 pm	Staff in classrooms ready to receive children from 8.45 – children enter via external classroom door.

Roles and Responsibilities

Overall school security is the responsibility of the employer. The employer is Kernow Learning and the headteacher is responsible for implementing the security policy.

Local Governing Body (LGB)

The School's Local Governing Body meets every term. As part of the headteachers report and Kernow Learning procedures for supporting and monitoring security on site, Governors receive updates as necessary.

Headteacher

The headteacher will ensure that standard procedures are in place to minimise risk and that all staff are fully aware of the security arrangements and of their own responsibilities, receiving such training as is necessary to fulfil those responsibilities.

There are regular risk assessments of security every year and regular routine security checks. Advice is obtained from the Police on security matters and all crimes are reported to the Police.

The headteacher is responsible for the security of the premises during the school day; in his absence, senior leaders assume this responsibility.

Staff

Teaching and non-teaching staff should be fully cognisant of the security procedures and know how to:

- protect pupils from harm
- guard against assault
- safeguard property
- contact the police/emergency services
- implement the emergency procedures and critical incident plan.

New staff are informed of the school's security policy and of their responsibilities before taking up their post.

Pupils

As the children progress through the school, they are made increasingly aware of the security procedures. They should be encouraged to assist with these procedures when possible. Within the PSHE curriculum the pupils will be taught about personal safety and social responsibilities.

Parents

The parents of pupils at Wendron C of E School are kept fully informed of security procedures, and of their responsibilities when visiting the school, in the:

- School Prospectus / Website
- new Foundation Stage Parent's meetings
- school newsletter
- individual letters

Police/Local Community

Our School values working in partnership with the local police and community in assisting with the security arrangements for the school site and the surrounding area. The School communicates with the local community/liaison Officer and the community Neighbourhood Watch on security matters and local residents are encouraged to report incidents they witness directly to the police. The Headteacher writes to local residents when we are undergoing large scale works at the school and when local residents report incidents to us or the authorities, the Headteacher makes contact to express our thanks.

The Police are called immediately if there is an incident of a violent, aggressive or abusive nature. The Police should be called immediately when a child goes missing, for example after school. Do not wait until a search has taken place.

Local schools are informed on current matters of concern, for example if a stranger is spotted loitering outside the school.

Security Strategies Control of Access

Wendron C of E School has a policy of welcoming visitors; however, we realise that problems can occur with angry parents, disaffected young people, criminal trespass or even child abduction or assault. To minimise the risk to the school community, especially the children, we have introduced procedures to limit access to the school site.

School Grounds

- Between 8am and 9am the school gates are open parents may use the one way system onto the playground and through the car park to drop off their children.
- Pedestrians **must not** enter or exit the site through the large car park gates.
- Pupils with bikes or scooters must dismount on entering the school site and push them to the bike shed. Similarly, on leaving the site, bikes and scooters should not be ridden until outside of the school perimeter.
- The gates to the car park will be open until 9.00 am when it is locked and then reopened again at 3.00pm.
- Pupils can arrive on site from 8.00am for breakfast club then from 8.45 onwards; the school does not provide supervision before this time and so pupils must not arrive earlier.

Access for pupils, parents and visitors

- Between 9.00 am and 3.00 pm all parents and other visitors must enter through the pedestrian gate in the car park (buzzer entry) and then enter exit the building through the main reception/school office area at the front of the school site.
- On arrival at school children enter through their classroom door where they are met by a familiar adult.
- At the end of the day all parents are expected to collect their child from the white wall and escort them safely, on foot, to their vehicle and from the school site. Please note that staff will always be available around the outside of the building at this time but the child's safety, well-being and behaviour is the responsibility of the parent.

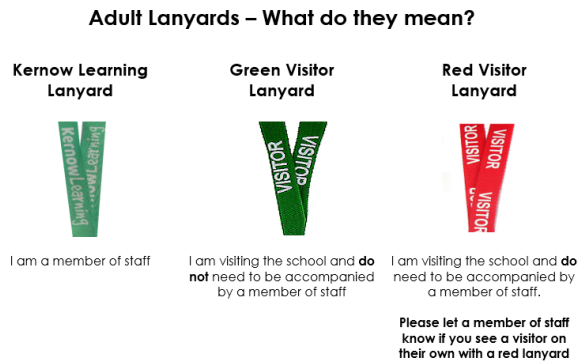
All office doors should be locked when not in use and all cloakroom/external doors closed at the end of break times.

All visitors to the school should report to the reception area, which is clearly marked. In the first instance, a member of the administration team will meet visitors; they will be asked to sign in, read the visitors pack and give the reason for their visit.

A member of the admin team escorts visitors to the member of staff requested – or asks visitors to wait in the entrance foyer whilst a member of staff is contacted. The member of staff then comes to collect the visitor.

All visitors are instructed to wear a badge before they are allowed into the main part of the school. These are colour coded and reflect their level of safeguarding checks.

Posters (see left) are displayed in all areas of school showing the colour coding of these.



No visitor is given unrestricted access to the school; this includes parents. All children and colleagues are alert to unrecognised adults in school. Children should report unknown visitors to the nearest member of staff. If a stranger is noticed in school, staff should establish his or her identity and reason for the visit.

If, at any time, an unsatisfactory reason is given, or proof of identity cannot be produced then the member of staff concerned should ask for assistance from the nearest colleague.

The unauthorised person is asked to leave and escorted from the premises, as they are committing a trespass. If that person refuses, becomes aggressive or damages property, no attempt should be made by staff to eject the intruder and the police should be called immediately.

If parents wish to take their child(ren) out of school during the school day, they should report to the Reception area. A request to take a child out of school should normally be made in advance in writing on form requesting leave of absence or verbally with the Attendance team. Pupils are signed out at the school office.

Trespass

Wendron C of E School is not a public place to which any member of the public is entitled to have access. Any person who enters without permission is a trespasser; trespassers are asked to leave. Trespass is not a criminal offence; however, if a trespasser refuses to leave the school premises, causes a disturbance or enters after being requested to leave, such behaviour could constitute a criminal offence under section 547 of the Education Act 1996.

If a parent is causing a disturbance, becoming abusive or violent towards a pupil, member of staff or another parent, the Headteacher might revoke the parent's permission to be on the premises by taking the following action. This is detailed in the Parents' Code of Conduct.

- The parent can be asked to leave and will be told 'I am revoking (withdrawing) your permission to be on the school premises'.
- If the parent still refuses to leave willingly, the Police are called.
- A formal letter from the Headteacher, Trust or LAB, confirming the parent's permission to visit the school has been revoked and that there is a five-day period in which to make representation. Formal notification is important, as their human rights are being affected.

The police should be called immediately if there is an incident that is causing concern of an aggressive, abusive or violent nature.

Entering and Leaving School

All children enter and leave the school by the designated entrances to their classroom doors. The front door is to be used only if a child arrives after 9.00am, when they should report (that they are late) to the office. Some children may have special arrangements in place to use the front door.

Leaving School at the End of the Day

At the end of the school day, the children leave by the designated exit or classroom door and can be collected from behind the white wall in the playground. Teachers (or known school adults) are with classes at the end of the day and 'match' pupils to collecting family members.

If, after five minutes, no one has arrived, the teacher takes the child to the office and telephones to see what the delay might be. The child will be taken to After School Club until an authorised adult arrives. No child is allowed to leave unless we are sure they are safe.

If a child goes home by taxi then all taxi drivers report to the office on arrival, show their identification and state the name of the child they are collecting. Children who travel home by taxi wait in the entrance area.

Leaving School During the Day

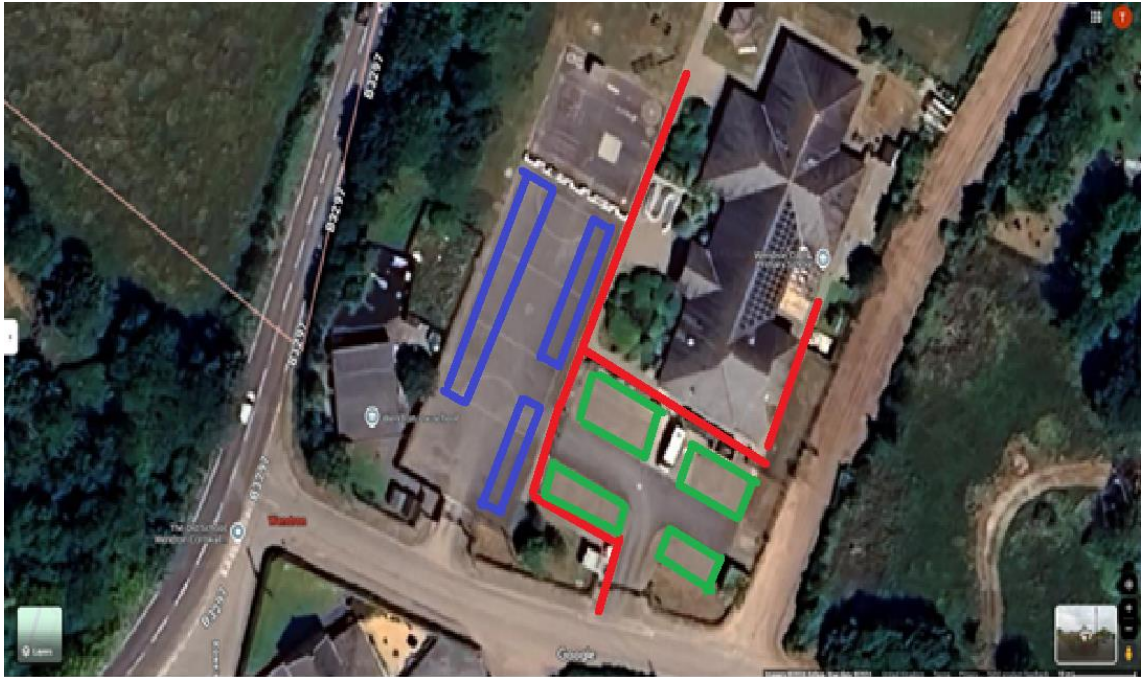
No child is allowed out of school for an appointment during the day, unless a known adult arrives to collect him or her and reports to the office first. Prior notice should be given to the school.

Car Parking Rules and Guidelines

These guidelines have been produced to help ensure the safety of all visitors, parents, children, and staff at Wendron C of E Primary School and we are grateful for your full cooperation. This document forms part of the risk assessment for the safety of everyone entering or leaving the school site. Parents and carers are

reminded that they are responsible for their children in the car park and at the pick up and drop off zones and they should be closely supervised at all times.

- All drivers must exercise due care and attention when driving and manoeuvring in the car parking areas.
- Pedestrians entering our site must use the allocated pedestrian route as marked in **red** on the attached plan.
- The bays marked on the attached map in **blue** are the parking spaces to be used during pick up and drop off times.
- The bays marked on the attached map in **green** are the parking spaces reserved for staff and for visitors arriving after 9.00
- There is to be no parking on designated walk ways or double yellow lines.
- Access for emergency vehicles must be maintained at all time.
- Users of the school car parking areas do so at their own risk. Wendron C of E School will not accept responsibility for damage, accident or loss to vehicles or contents.
- Users of the school car parking area are reminded that there is a strict 5mph speed limit and must be adhered to.
- Any users of our car parking areas are to be polite and courteous at all times. Please give consideration for other users of the car park.
- In the event of any incident(s) in any of the car parking areas, Staff will review the situation with a view to taking appropriate action. This may result in the withdrawal of the right to park on the school site for the individual(s) concerned.
- Use of our car park will be regularly reviewed. Parking on the school site is a privilege and not a right. This may be withdrawn by the School if it is felt that the safety of the children is being compromised by inappropriate use of our car park.



Security of Equipment and Cash

Main items of school equipment, for example computers, laptops and other equipment are security marked. The school utilises a payment system which has minimised the need for any cash to be sent into school by parents. Any petty cash on the premises is kept in the safe but money is banked regularly.

Security of Building

An effective intruder alarm is in operation. This is always set when the school is empty and Security lighting has been installed.

It is the responsibility of the class teacher to make sure that their classroom is secure, the windows closed, and equipment switched off, before leaving the premises.

The Headteacher, Premises Team, site supervisor, the lock up team and Admin Manager are designated key holders and are responsible for the security of the building.

Estates Manager

It is the responsibility of the Estates Manager to check that all locks and catches are in working order, that the emergency lighting is working, that the fire alarm has no faults, and that the security system are working properly.

Before leaving the premises, the nominated Keyholder has a duty to ensure that all the windows are closed, that the doors are locked and secure, that the security alarm is set and that all gates are locked.

Contractors in School

When contractors are working in School, the following precautions should be taken:

The Headteacher agrees a convenient time for the work to be completed – out of school time if possible – and school staff should be made aware of the work taking place and of any Health and Safety issues. The Estates Manager should check regularly that the work is being carried out safely.

Contractors should report to the reception area on arrival and before leaving, signing in and out. When on the school site, badges, identifying the company for which they work, should be worn at all times. Contractors should complete maintenance logs, when appropriate. Contractors used by the Trust on a regular basis are detailed on the Single Central Record which confirms that necessary safeguarding checks are in place. Contractors should take extreme care with building materials, ladders, tools and any other equipment. Health and Safety standards should be observed throughout the period of the contract. On completion of the contract, any relevant documentation should be obtained, for example electrical test certificates.

Outside School Premises

In order to ensure the safety of our children and the orderly flow of traffic around the outside of the school site we ask that all parents and visitors take notice of the following.

Walking

When crossing the road please take care of traffic from all directions.

Driving

Please always drive with due care and attention to pedestrians and adhere to the strict 5mph speed limit on site. On leaving, if you intend turning right towards the main road and the route is congested please instead turn left and take an alternative route – this will ensure traffic flow is maintained and cars are able to freely exit the school car park.

Parking

Do not park in front of either of the 2 car park gates – these must be kept free at all times for emergency vehicle access.

In order to further assist, the following rules have been taken from **CORNWALL CIVIL PARKING ENFORCEMENT PROCEDURES** document published by Cornwall Council.

- *Do not block entrances to private properties – dropped kerbs.*
- *Do not double park.*
- *Do not park on footways.*
- *Do not park on 'School Keep Clear' markings or the yellow zig-zag*

markings near to schools.

Failure to do this, may result in your car details being reported to the police.

Access Outside School Hours

On occasion, staff, pupils or contractors require access to the school out of normal school hours, in the evenings or at weekends and in the holidays. Our School is aware that some staff are working on the premises before and after school and their security has to be safeguarded.

No person should be in the School on their own, if at all possible. If this is unavoidable, all the doors should be locked and the staff member should have access to a phone.

Curtains and blinds should always be closed in the evening, but especially if staff are working late. When the Hall is used for evening lettings, the hirer should have access to this area only; the remainder of the building should be locked.

Fire Detection Systems

Wendron C of E School we acknowledge that one of the most serious threats is arson and to reduce the risk, we take the following precautions.

Fire detection and alarm systems are in place throughout the school and tested regularly.

Fire drills take place each term. All fire exits are kept clear at all times and neither left open, or locked from the inside.

The school grounds are kept clear of litter and movable objects that could be used to start a fire. The school refuse bins are placed to prevent intruders or pupils using them to start fires or as a means of access to the roof.

Offensive Weapons

It is a criminal offence to carry an offensive weapon or knife onto the site. Offensive weapons are defined as 'any article made or adapted for causing injury to the person, or intended by the person having it with him for such use by him or some other person.'

If it is judged that the circumstances are innocent, the matter is dealt with on a disciplinary basis. If there is any doubt, the police are summoned and they assess the seriousness of the incident.

Staff are under no obligation to search a pupil whom they suspect is carrying an offensive weapon. If the child agrees to co-operate, a search might be the least inflammatory way to prevent violence. Searches of pupils' belongings can, if a high risk is identified, be carried out by the Headteacher or a member of SLT. This is always undertaken with a colleague present. If there is a very high risk or a child refuses, a search must be carried out by the police. Wendron C of E School, we will make every

effort to ensure a parent or guardian is notified as soon as possible, so they can be present during the search and subsequent investigation.

When the person suspected of carrying an offensive weapon is not a pupil at the school, or an incident occurs off the school premises, the police are informed and they carry out the search and an appropriate investigation.

Confiscation of Weapons

Staff take possession of a knife or any weapon brought to school by a pupil. The staff authorised to do this are the Headteacher and Assistant Headteachers.

The item is locked away; staff should either:

- Arrange for the parent or guardian to take the weapon away, if circumstances indicate this to be a reasonable course of action.
- However, in no circumstances should some weapons – e.g. flick knives and knuckle-dusters – be returned.

When weapons are returned to parents, a record should be kept

Or

Arrange to surrender the weapon to the police without delay and inform parents of any police involvement.

Critical Incident

If the security of the school is breached, leading to a critical incident (or example, a pupil or member of staff being attacked or a bomb threat), the **Critical Incident Policy** is implemented with staff and Trust leaders responding to the procedures.

Reporting Incidents

All incidents of crime and losses are recorded in the Police File Log, including information on the date, time, location, cost, staff, parents involved, action taken, and so forth. The Police and LA are notified.

A review of incidents over the year is distributed to the Governors.

Review of Policy and Procedures

For all monitoring of local policies, we adopt a rigorous and reflective approach. We take into account multiple perspectives on the effectiveness and success of the policy and procedures in question, including:

- the experience of the member(s) of staff designing and delivering the provision;
- feedback from our pupils
- observations and feedback from staff – both internal and external

- engagement in research, relevant literature, and continuing professional development (e.g. relevant training/workshops).

These perspectives inform our action plans for each aspect of our school provision – with an emphasis on meaningful reflection, improvement and enabling everyone to flourish and shine.

Further Information

This policy should be read in conjunction with:

- Access to School Site Policy
- Critical Incident Policy
- Parent Code of Conduct
- Staff Conduct

Useful documentation and Resources

DfE School Security – [DfE website](#)

DfES/Home Office School Security; Dealing with Troublemakers 1997

DfES The Human Rights Act and Your School 0194/2000

HDA Violence at Work 2/97

HSE Contractors in Schools

NAHT Managing Security in Schools – series of five books 2000

The Stationery Office Managing School Facilities – A guide to Improving School